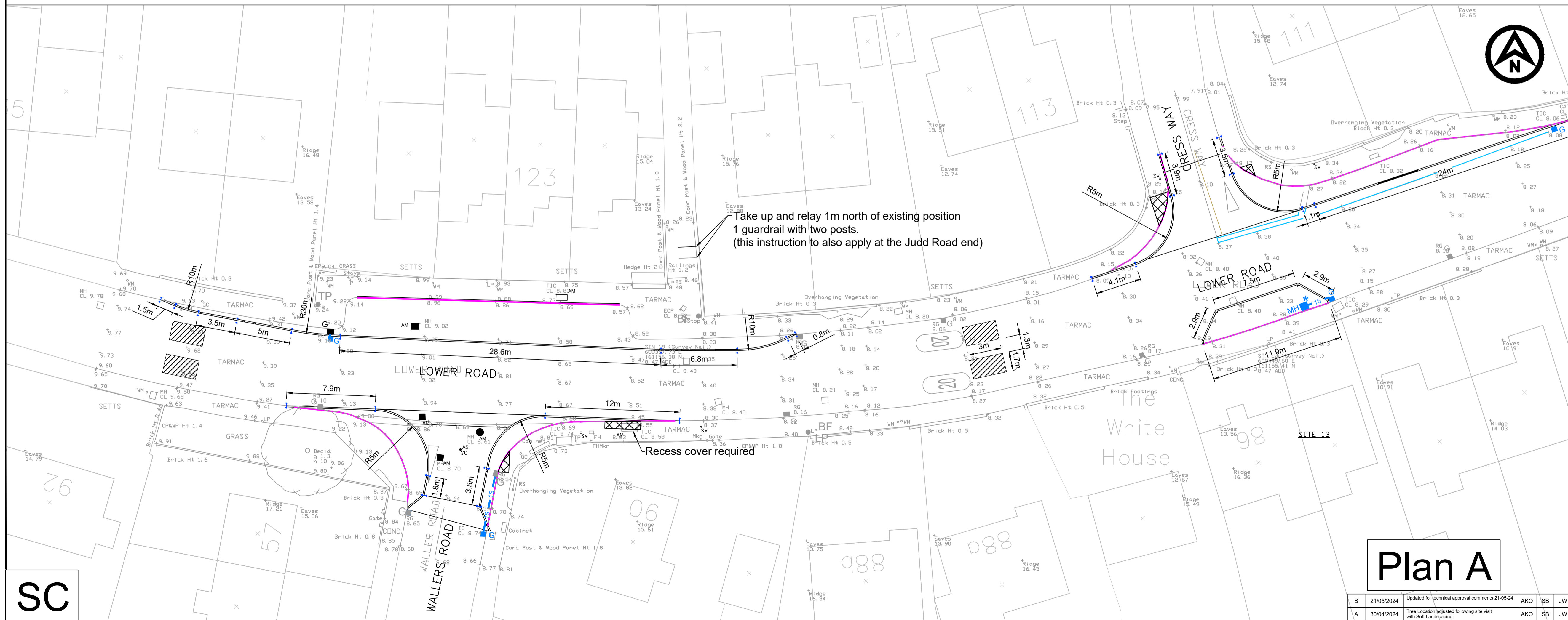


Plan A

GA

- Notes**
- Please see notes cover sheet which applies to all drawings
- Kerbing / Footway / Carriageway Construction Key**
- Overlay footway with AC6 dense surf 100/150 20mm thick over AC10 regulating layer. Perimeter of surface course to be keyed into existing surface course to give a minimum layer thickness of 20mm. All joints to be saw cut.
  - See design drawing for details
  - New grass seeding laid on a layer of top soil and Type 1 base. All joints to be saw cut
- HB2** Proposed 125 x 255mm half battered kerbing (Type HB2)  
 "Haunch/Variation B" upstand 125mm to KCC/1100/001/D
- DK** Proposed 125 x 150mm bullnose kerbing (Type BN). Upstand 0-6mm to KCC/1100/001/D.
- TK** Proposed 125 x 150mm bullnose kerbing (Type BN). Upstand 25mm to KCC/1100/001/D.
- D** Proposed 150 x 305mm half battered kerb (Type HB1) laid as dropper at bus boarder KCC/1100/006.
- T** Proposed 125 x 150mm tapered kerb units (Type "DL / DR or CKL / CKR") to KCC/1100/001/D.
- Q3** PCC quadrant kerb (Type QHB305).
- AM** Buff PCC tactile paving 400 x 400mm. 50mm thick slabs, to KCC/1100/015.  
 Blisters to align with tactile on opposite side of road.
- AS** Buff PCC tactile paving 400 x 400mm. 50mm thick slabs, to KCC/1100/015.  
 Blisters to align with tactile on opposite side of road.
- 18S** 60mm SMA 10 55 surface course 40/60 WTR2, 60mm SMA 14 60/20 WTR2, 185mm AC32 HDM Base 40/60, 165mm Type 1 Subbase 88BAR
- 50mm SMA10** surface course 40/60 WTR2 laid on, 60mm SMA 14 60/20 WTR2.
- Reinstatement for carriageway:**  
 50mm SMA10 surface course 40/60 WTR2
- MMA** "black colour" anti-skid material laid above existing surface.
- New** New courtesy crossing feature using red, grey or buff surfacing (to be agreed on site with engineer). See details from KCC-HTW-1100-AT-1B
- 2** No. new Marshalls Reinforced Concrete speed cushions as per Technical Datasheet. Construction: AC32 subbase, Fast setting M60 based screed (with 1 day cure time before the surface course around the cushion is laid) and a AC10 surface course. Approx. 135mm depth.
- TH** Non-illuminated traffic sign (refer to Sign Schedule for details).
- ▲** Sign position and orientation (refer to Sign Schedule for details)
- 0203** New / Refreshed Road marking to TSRGD 2016 Diagram number.
- White Road marking.
- Yellow Road marking.
- B** Timber bollard with red / white bands (see Sign Schedule).

- Site Clearance Key**
- Remove and dispose of existing kerb including bedding and backing. \* Disposed of at Contractor's licensed tip.
  - Remove road marking by hydroblasting
  - \* Take up existing blocks / pavers including sand/cement layer to store for reuse
  - \* Mill bituminous carriageway depth 100mm but not exceeding 125mm coal tar contaminated
  - \* Mill bituminous carriageway depth not exceeding 50mm
  - \* Break-out and dispose of existing concrete material
  - Excavate soft material to a depth of 100mm and tip
  - \* Backfilling disused gully internal diameter 400mm with in situ concrete ST2.
  - \* Bollard to be taken up and set aside for reuse
  - Tangent Point
  - Sign (and post) to be removed (refer to Sign Schedule).
- Drainage Key**
- MH** Take up and adjust manhole cover to new level.
  - AM** Take up and adjust medium service cover to new level.
  - AS** Take up and adjust small service cover to new level. Adjust existing gully grating and frame.
  - AG** Adjust existing gully grating and frame.
  - NG** PCC trapped gully with class D400 grate as KCC/SD/500/009.
  - \*** Connection of 1500 pipe to new PCC chamber.
  - 18S** 1500 Twin wall pipe in Type S bed and surround.
  - MH** New manhole chamber design group 1a (refer to KCC/SD/500/001 for details).
  - G** Existing road gully
- Street Lighting**
- New lamp column (see illuminated Sign Schedule).
  - New belisha beacon (see illuminated Sign Schedule).
- Soft Landscaping**
- ★** 12-14cm girth Field Maple Tree "Acer Campestre" and pit (see drawing details KCC-HTW-300-11). Pit volume 0.75 x 0.75 x 0.5m



Plan A

SC

**Kent County Council**  
 kent.gov.uk

**Kent County Council**  
 Ashford Highway Depot  
 Henwood Industrial Estate  
 Ashford  
 TN24 8AD  
 Tel: 03000 418181

Project		Active Travel	
Faversham Cross Town Improvements		Design Drawing	
Sheet 1		Detailed Design	
Scale	1:200 at A1	Do not scale	
Drawing number	23-SW-AC-873-02	Rev	
		B	B

B	21/05/2024	Updated for technical approval comments 21-05-24	AKO	SB	JW
A	30/04/2024	Tree Location updated following site visit with Soft Landscaping	AKO	SB	JW