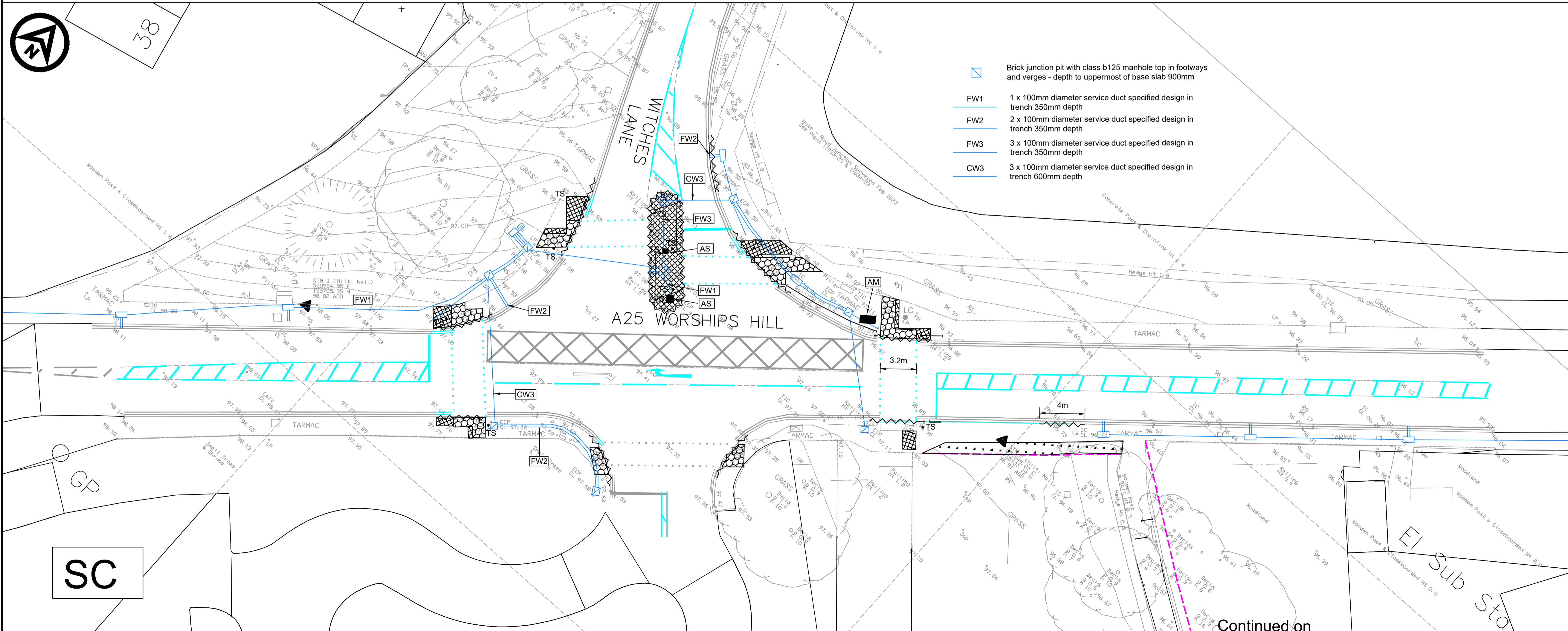


© Crown Copyright and database right 2024.  
Ordnance Survey 100019238.

- Notes**
- Please see notes cover sheet which applies to all drawings
- Kerbing / Footway / Carriageway Construction Key**
- Overlay footway with AC6 dense surf 100/150 20mm thick over AC10 regulating layer.
  - Full depth footway construction. AC6 dense surf 20mm thick 100/150 thick over 60mm thick AC20 regulating layer and 70mm thick AC20 dense base 100/150 over 150mm Type 1 to clause 888AR
  - New paving block / flag laid on 50mm sand/cement base and/or laid on existing base material (see design drawing for details)
  - KBI flexpave material added in parts to widen footpath in wooded areas. (extent to be agreed on site with designer)
  - New grass seeding laid on a layer of top soil and Type 1 base.
  - KCC to acquire land to widen existing path (agreement required)
  - Side-out width of existing private path (as agreed on site)
  - Highway Boundary Line
  - Porcupine wall @ max 800mm height (refer to technical details)
  - HB2 Proposed 125 x 255mm half battered kerbing (Type HB2).
  - DK Proposed 125 x 150mm bullnose kerbing (Type BN). Upstand 0-6mm to KCC/1100/001/D.
  - TK Proposed 125 x 150mm bullnose kerbing (Type BN). Upstand 25mm to KCC/1100/001/D.
  - Proposed 150 x 305mm half battered kerb (Type HB1) laid as dropper at bus boarder KCC/1100/006.
  - Proposed 125 x 150mm tapered kerb units (Type 'DL' / DR or CKL / CKR') to KCC/1100/001/D.
  - PCC quadrant kerb (Type QHB305).
  - Buff PCC tactile paving 400 x 400mm. 50mm thick slabs, to KCC/1100/015. Blisters to align with tactile on opposite side of road.
  - Buff PCC tactile paving 400 x 400mm. 50mm thick slabs, to KCC/1100/015. Blisters to align with tactile on opposite side of road.
  - 50mm SMA 10 SS surface course 40/60 WTR2, 60mm SMA 14 60/20 WTR2, 185mm AC32 HDM Base 40/60, 165mm Type 1 Subbase 888AR
  - 50mm SMA10 surface course 40/60 WTR2 laid on, 60mm SMA 14 60/20 WTR2.
  - MMA "black colour" anti-skid material laid above existing surface.
  - MMA "red colour" anti-skid material laid above existing surface.
- Signage**
- Non-illuminated traffic sign (refer to Sign Schedule for details).
  - Sign position and orientation (refer to Sign Schedule for details)
- Markings**
- New / Refreshed Road marking to TSRGD 2016 Diagram number.
  - White Road marking.
  - Yellow Road marking.
  - Reflective bollard (see Bollard Schedule).
  - Steel bollard with cycle logos (see Bollard Schedule).
  - Timber bollard with cycle logos (see Bollard Schedule).
- Site Clearance Key**
- Remove and dispose of existing kerb including bedding and backing. \* Disposed at Contractor's licensed tip.
  - Remove road marking by hydroblasting
  - Take up existing blocks / pavers including sand/cement layer to store for reuse
  - Mill bituminous carriageway depth 100mm but not exceeding 125mm coal tar contaminated
  - Mill bituminous carriageway depth not exceeding 50mm
  - Break-out and dispose of existing concrete material
  - Excavate soft material to a depth of 240mm and tip
  - Backfilling disused gully internal diameter 400mm with in situ concrete ST2.
  - Bollard to be taken up and set aside for reuse
  - Tangent Point
  - Sign (and post) to be removed (refer to Sign Schedule).
- Drainage Key**
- MH Take up and adjust manhole cover to new level.
  - AM Take up and adjust medium service cover to new level.
  - AS Take up and adjust small service cover to new level.
  - AG Adjust existing gully grating and frame.
  - NG PCC trapped gully with class D400 grate as KCC/SD/500/009.
  - Connection of 1500 pipe to new PCC chamber.
  - 1500 Twin wall pipe in Type S bed and surround.
  - New manhole chamber design group 1a (refer to KCC/SD/500/001 for details).
  - Existing road gully
  - FW1 1 x 100mm diameter service duct specified design in trench 350mm depth
  - CW3 3 x 100mm diameter service duct specified design in trench 600mm depth
- Street Lighting**
- New lamp column (see illuminated Sign Schedule).
  - New / Cleaned belisha beacon (see illuminated Sign Schedule).



- Brick junction pit with class b125 manhole top in footways and verges - depth to uppermost of base slab 900mm
- FW1 1 x 100mm diameter service duct specified design in trench 350mm depth
- FW2 2 x 100mm diameter service duct specified design in trench 350mm depth
- FW3 3 x 100mm diameter service duct specified design in trench 350mm depth
- CW3 3 x 100mm diameter service duct specified design in trench 600mm depth

Rev	Revision Date	Purpose of revision	Drawn	Checked	Appr'd
A	08-08-2024	Detailed Design Amended to incorporate RSA2 comments	AD	SB	JW

**Kent County Council**  
Kent.gov.uk

**Kent County Council**  
Ashford Highway Depot  
Herwood Industrial Estate  
Ashford  
TN24 8AD  
Tel: 03000 418181

Project: Active Travel - Sevenoaks East-West Walking, Wheeling and Cycling Route

Drawing title: Detailed Design Drawing - Sheet 1

A25 Worships Hill j/w Witches Lane

Drawing status: FOR CONSTRUCTION

Scale: 1:200 at A1 | Do not scale

Drawing number: 22-23-SE-AC-32-03 | Rev: A

This drawing is not to be used in whole or part other than for the intended purpose and project as defined on this drawing. Refer to the contract for full terms and conditions.

Continued on