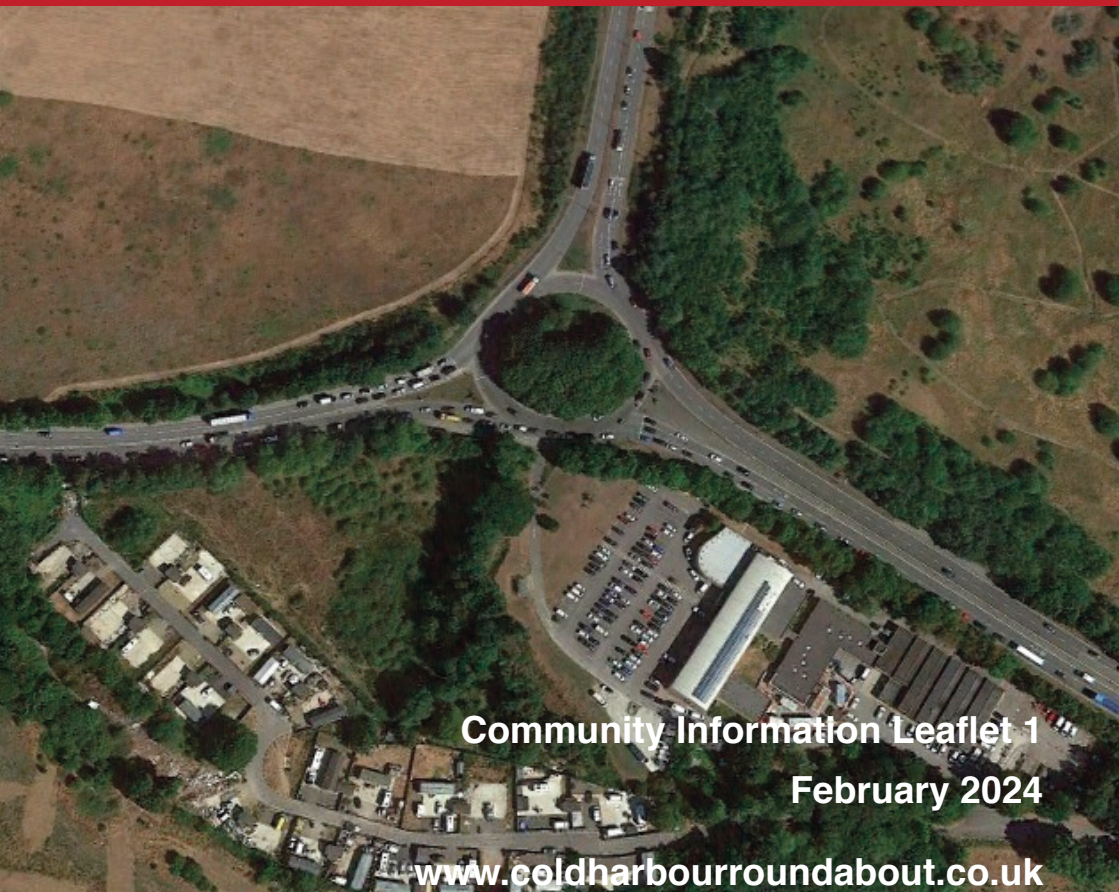




HM Government

# A20 Coldharbour Roundabout Improvement Scheme



Community Information Leaflet 1

February 2024

[www.coldharbourroundabout.co.uk](http://www.coldharbourroundabout.co.uk)



SOUTH EAST  
LOCAL ENTERPRISE  
PARTNERSHIP



## Project Overview

**The A20 Coldharbour Roundabout Improvement Scheme is designed to replace the existing signal-controlled roundabout junction on the A20 at Coldharbour Lane.**

The junction connects the A20 corridor to the Strategic Road Network at Junction 5 of the M20. The site is located 2km to the north-west of Maidstone, Kent on the A20 corridor between Allington and Aylesford.

Civil engineering specialists Breheny Civil Engineering will start construction on Monday 12 February 2024.

The Project will comprise the following works:

- The construction of a new larger non-signalised roundabout to replace the existing signal-controlled Coldharbour roundabout. It will allow 3 lanes to go around the roundabout.
- New upgraded surface water drainage system and installation of attenuation tank.
- Re-surfacing of the improved roundabout, A20 London Road and Coldharbour Lane carriageways.
- Diversion of existing utility services including UKPN High Voltage and Low Voltage electric cables and Virgin Media communication cables.
- Auxiliary works including street lighting, landscaping, fencing, road marking and new traffic signs.
- A new field access is being provided from the northbound carriageway of Coldharbour Lane.

Pedestrian routes will always be maintained via a diversion of the existing footway around the construction works.

## Project Benefits

This project will support the level and distribution of development being proposed in the Tonbridge and Malling Borough Council and Maidstone Borough Council Local Plans.

Furthermore, the scheme aim is to ease congestion along the A20 corridor in Aylesford.

The following benefits will be delivered:

- Improved capacity of the Coldharbour roundabout by 60% in the morning peak period and 40% in the evening peak period.
- Improve journey times and the reliability of journey times for those travelling through the roundabout.
- Improved access to the 20-20 Business Park and South Aylesford Retail Park.
- Improved surface water drainage system.
- Improved air quality in the area.
- Improved capacity on the road network to accommodate further development.

## Project Timeline

Construction works are due to commence on 12 February 2024 and the project is planned to be complete in December 2024.

Initial works will include tree and vegetation clearance, construction of temporary footpaths and diversions, establishment of the site compound, drainage inspections and jetting.

Temporary lane closures will be implemented throughout the project



HM Government



SOUTH EAST  
LOCAL ENTERPRISE  
PARTNERSHIP



during off peak times ensuring minimal disturbance to the traffic. Full night-time road closures will be required for certain works, but we will ensure that access is maintained for emergency services, including ambulances travelling to Maidstone Hospital.

Traffic management will generally be restricted to off-peak hours, but for certain activities or during school holidays or weekends, these times may vary.

Residents, local business and road users will be notified in advance of any

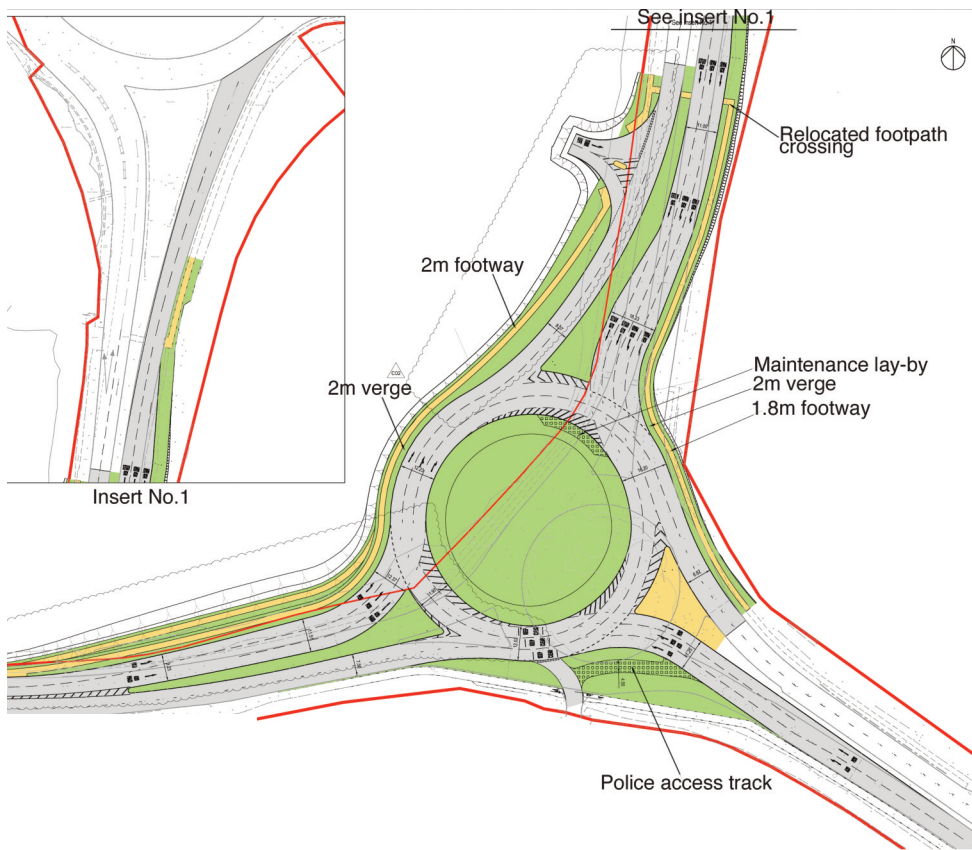
overnight road closure via letter drops and local signage in advance of the works taking place.

### Traffic Management / Closures:

Day: Mon - Fri (09:30 - 15:30) Off Peak Lane Closures

Night: Mon - Fri (19:00 - 06:00) Lane Closures and any full closures

**Weekends:** On occasions during the project there may be a need to work over weekends.



HM Government



SOUTH EAST  
LOCAL ENTERPRISE  
PARTNERSHIP





HM Government

## Contact Details

If you have any questions or comments about the Coldharbour Roundabout Improvement Scheme, please contact us using the details below.

**Email:** [info@coldharbourroundabout.co.uk](mailto:info@coldharbourroundabout.co.uk)

**Freephone (9am - 5pm, Monday - Friday):** 08081 759456

**Night Working / Weekends:** 07976 367359

You can also request to be kept up to date with progress on the project by registering for updates via the website.

**Web:** [www.coldharbourroundabout.co.uk](http://www.coldharbourroundabout.co.uk)

[www.coldharbourroundabout.co.uk](http://www.coldharbourroundabout.co.uk)



SOUTH EAST  
LOCAL ENTERPRISE  
PARTNERSHIP

