

## St David's Avenue, Dover

---

### What we plan to do

Kent County Council are planning to introduce bus stop clearways (yellow bus stop box markings) and 'at any time' waiting restrictions (double yellow lines) in St David's Avenue, Dover at the following locations:

- New bus stop clearway at side of no.17 St Patrick's Road
- New bus stop clearway in the bus layby opposite no.190 & no.192
- New bus stop clearway at the side of no.8 St Giles Road
- Waiting restrictions (double yellow lines) at the junction of St David's Avenue and St Patrick's Road

Please note the bus stop clearways will be placed at existing bus stops in St David's Avenue. No new bus stops are proposed.

(please see plans of what we are going to do on the next pages).

### How will we carry out the works and how will it affect you?

'No Parking' cones will be placed to help keep the area free of parked vehicles and enable our contractors to do the work. We would ask for your co-operation by parking your vehicle in an alternative location when the cones are in place.

### Why are we doing this work?

In March 2023, Kent County Council were allocated funding from the Department for Transport to support Bus Service Improvement Partnerships (BSIP). The BSIP is a document which describes how Local Transport Authorities and bus operators will look to achieve the goals of the National Bus Strategy. Part of Kent's plan involves working with operators to support bus punctuality and reliability by carrying out amendments to the highway. Several sites in Kent have been identified as requiring additional measures to prevent parking from interfering with scheduled services. The on-street parking at the locations above has been noted as creating issues with bus movements and as such parking restrictions are proposed.

### How you can help us

We need your help to make sure the work is done as quickly as possible and to the best possible quality. We want to complete the works as quickly as we can and without causing you too much inconvenience. If your vehicle is usually parked on the carriageway, please make sure you park it somewhere else away from the site whilst the works are carried out.

***For your safety and the safety of our workforce, please drive carefully and slowly through the roadworks.***

Feedback from our workers shows that too many drivers go too fast through roadworks. Everyone is entitled to a safe workplace and our staff work next to moving traffic and risk injury every day to maintain and improve the highway for everyone.

### How to contact us?

For further information or to find out more about what we do please visit our website [www.kent.gov.uk](http://www.kent.gov.uk) and type 'BSIP' into the search box or scan the QR code. You can also report a fault on any of our roads across Kent. You can find us on X (formerly Twitter) @KentHighways. You can also view our diversion/permit details at [www.one.network](http://www.one.network). Alternatively, you can call us on **03000 41 81 81**.



# Highway improvements in your area



## St David's Avenue, Dover

---

We often ask residents to fill in a short feedback survey online at [www.kent.gov.uk/roadworkssurvey](http://www.kent.gov.uk/roadworkssurvey).

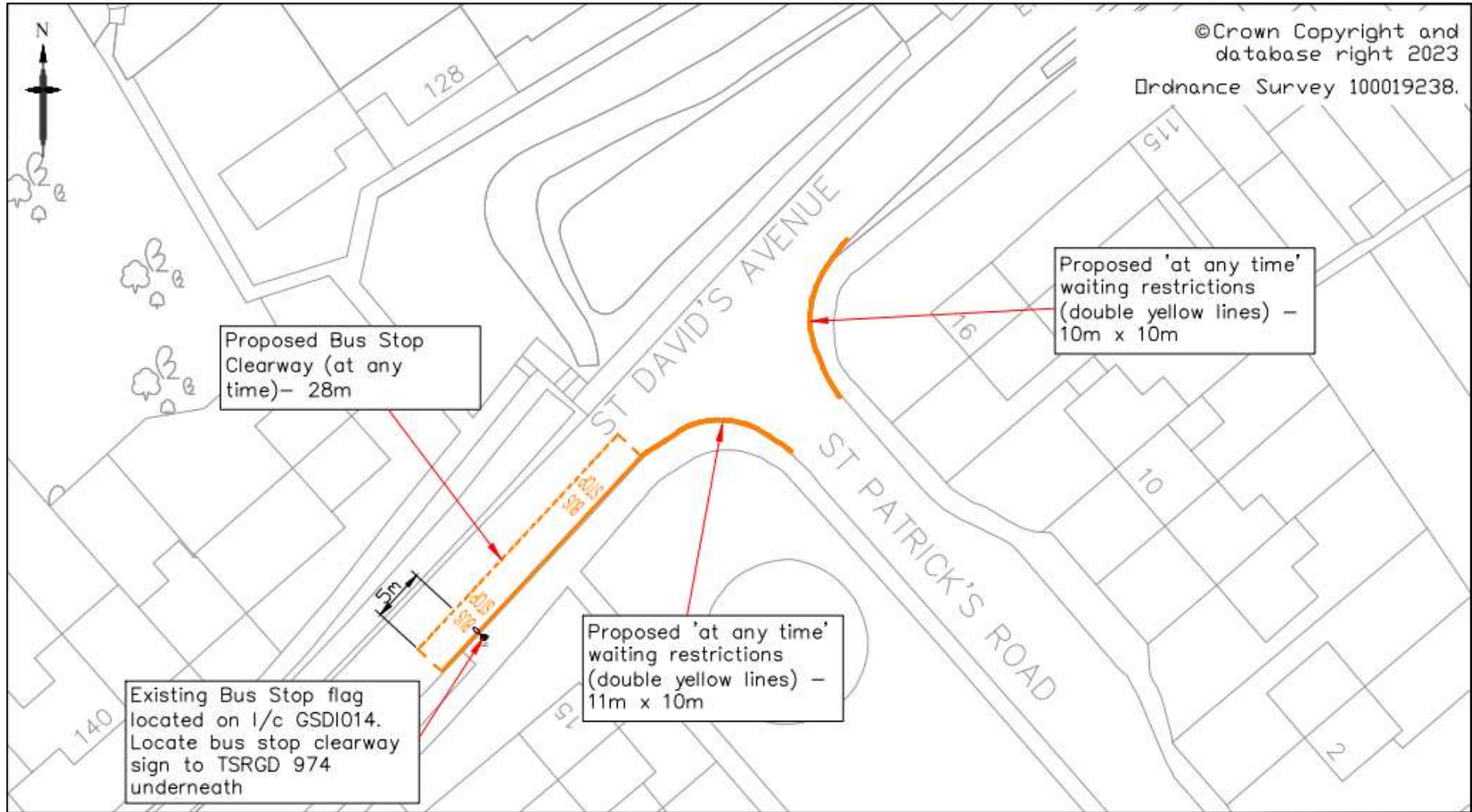
### **WARNING – Beware Bogus Callers**

Kent County Council Highways, Transportation and Waste do not allow works to be carried out on private property. If anyone says they are working for us or our specialist contractors and offer to carry out any work for cash, they should be treated with caution. We advise you to contact Citizen's Advice on 03444 111 444 (Monday to Friday 9.00am to 5.00pm)

Highway improvements are about to start near where you live.



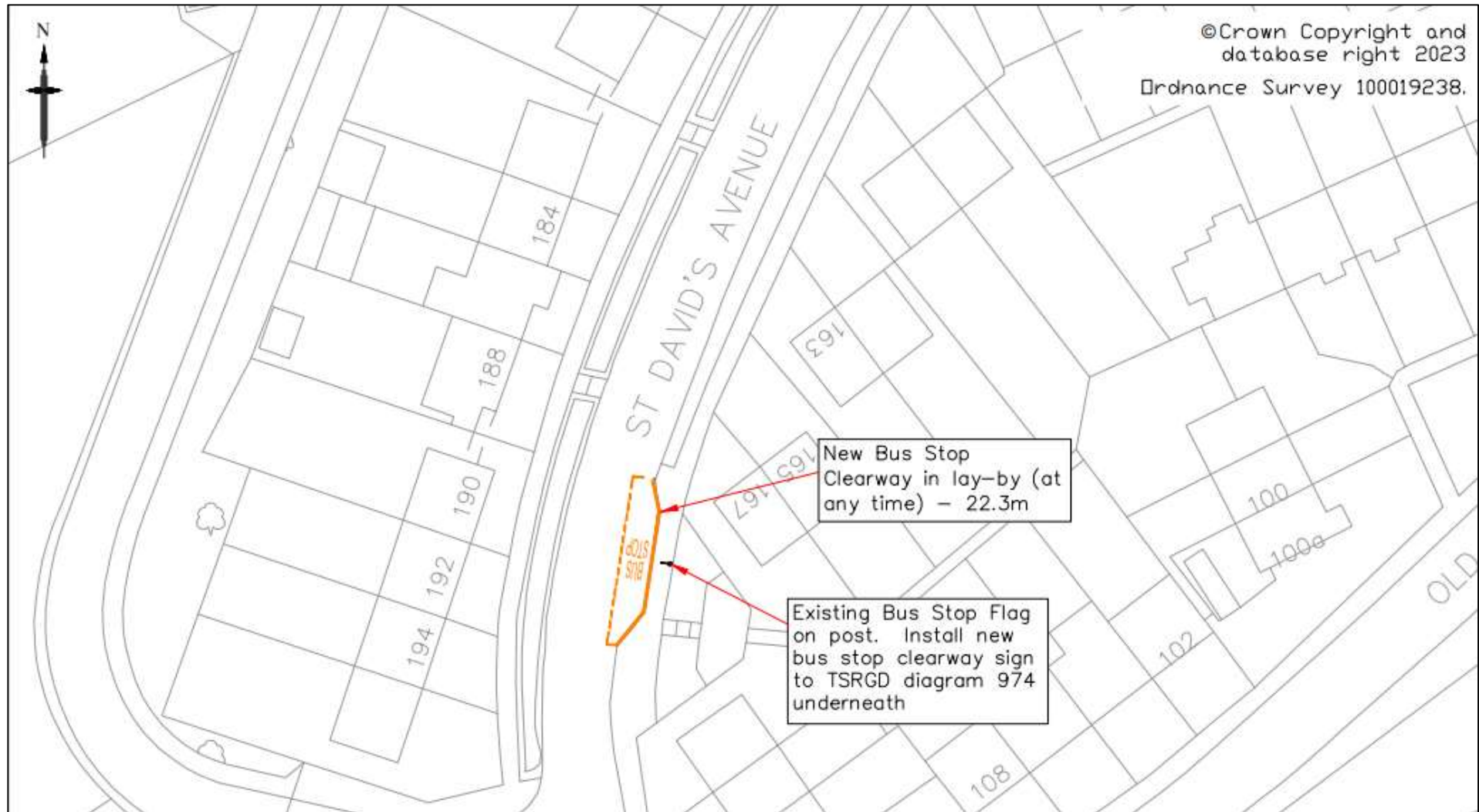
### St David's Avenue, Dover



Highway improvements are about to start near where you live.



### St David's Avenue, Dover





Highway improvements are about to start near where you live.



### St David's Avenue, Dover

